

# TASK FORCE

DIPLOMA UNIT 12A

## PRELUDE

Cities owe a debt to Society – not the other way around. Cities die when the debt becomes too great for Society to bear.

## PROPOSITION

That architecture through distortion of time and unnatural means can enable social feelings of well-being hitherto unimaginable.

That such prime manipulation of space has one of the best chances of success within a metropolis.

## PROCESS

Task Force required each individual designer to complete a contract detailing his or her aims, the means whereby they will be achieved, and the criteria by which their success will be judged.

## PRODUCT

The response of TASK FORCE has been to concentrate on the beneficial fragmentation of appetites, interests and social patterning that a 21st century metropolis should enable whilst still affording voluntary congregation.

The processes and systems of forecasting, communications, exchange and monitoring mix fruitfully with the availability of food, child care and domestic delights.

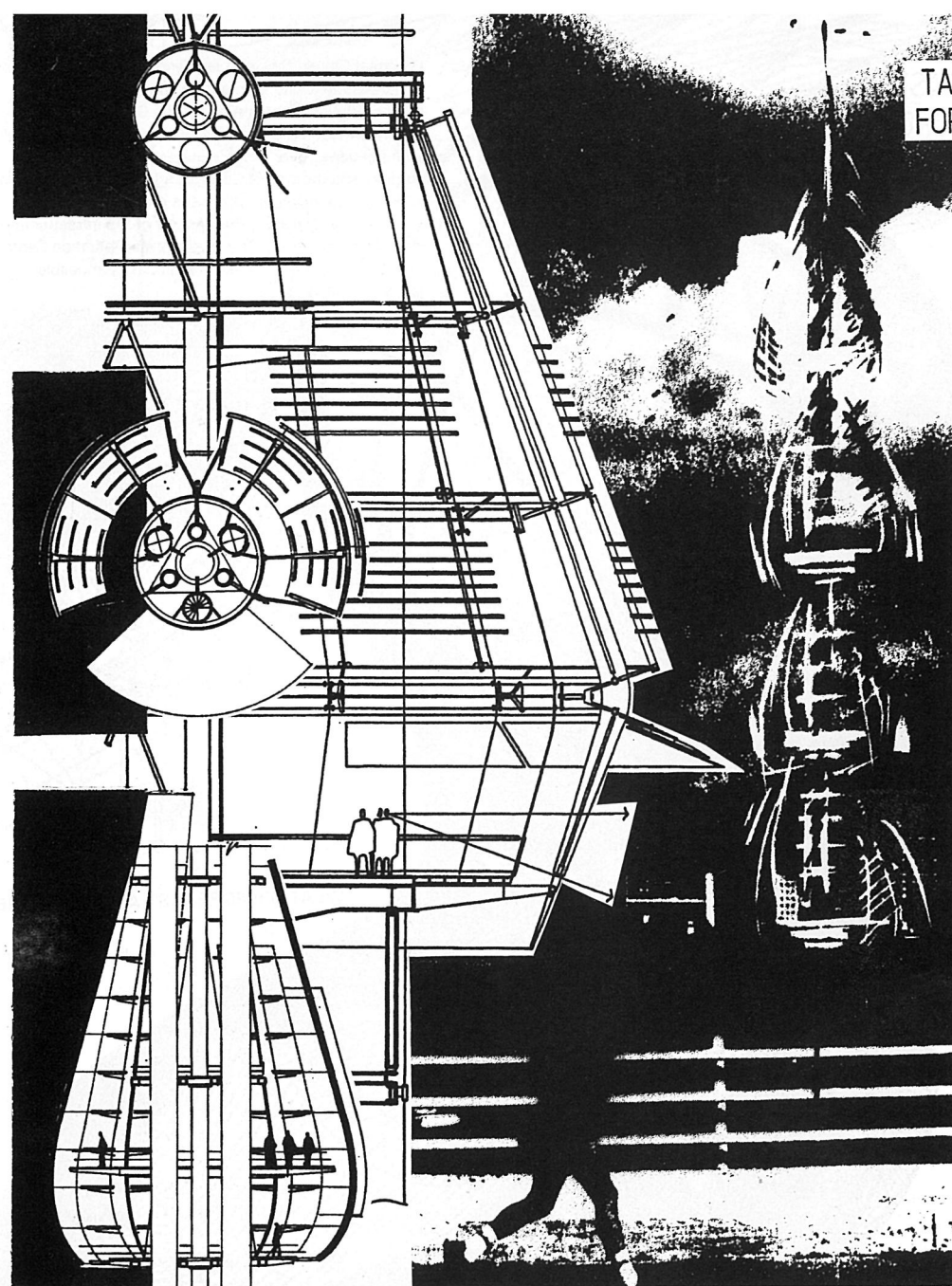


## CEDRIC PRICE TAKEO MURAJI

Yasmin Al-Ani  
Gin Johannes  
Daniel Chow  
Jonathan George Hagan  
Keiichi Saiki  
Rebecca Anne Woodward  
Jaime Parlade Browne

### Our special thanks to:

Alan Balfour  
Paul Barker  
Shin Egashira  
Jeremy Melvin  
Jonathan Moberley  
Taina Rikala  
Makoto Saito



## MONITORING LONDON

It takes more than simply adding another building to improve London. An all-round improvement can only be achieved by raising the public's awareness of and interest in its surroundings.

The project is a tower that monitors London's layers, i.e. air, water, traffic, underground. It will form the central point for a larger monitoring network aimed at the public. The information collected by the building is immediately made accessible to users – the people of London.

by Yasmin Al-Ani

## TASK FORCE

I suggest Cloudy City, one enabling the inhabitants to look down on Bright City. It might be accepted if it could be reconciled with the yearning for the City of Delight. An architect must make Cloudy City itself the City of Delights, with the upper layer of the clouds as a plateau for this purpose and the City of Controls afloat side by side below, and all appearing as clouds to the existing city. This scheme considers the transfer of the infrastructure from the existing city. The Radiozonde Operation Centre is a departure for weather observation as changeable information and space.

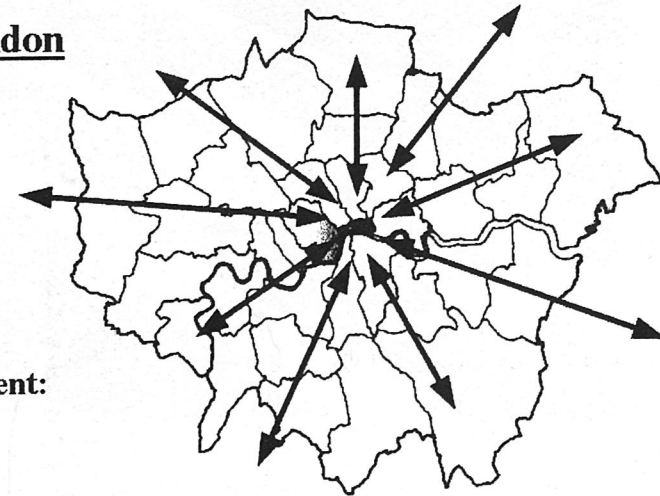
WEATHER FORECAST AND CITY FORECAST

by Gin Johannes

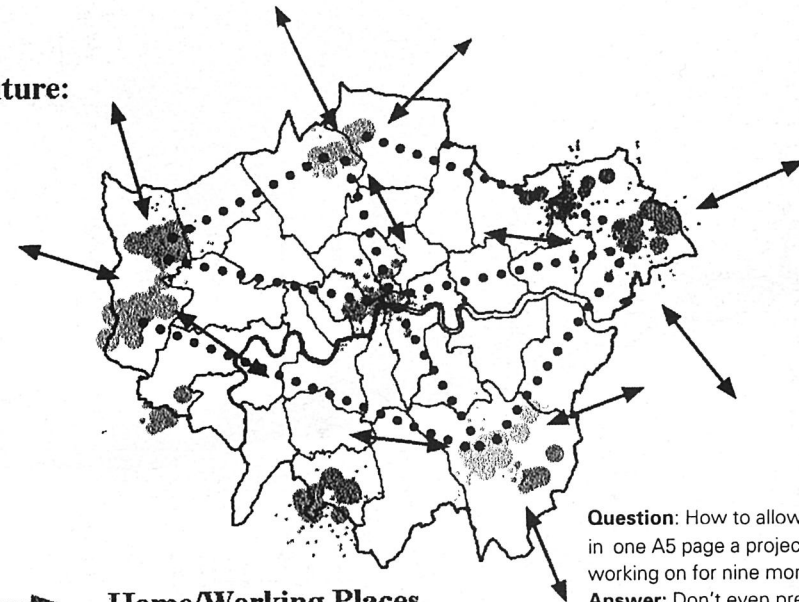
## London

216-217

present:



future:



Home/Working Places



Tele-Offices



Electronics Link

**Question:** How to allow others to understand in one A5 page a project which I have been working on for nine months.

**Answer:** Don't even pretend it's possible.

**Teleworking:** Working away yet maintaining contact with (head) offices using various communication techniques and technology.

To explore its (social) **implication**, and how it could **be used**.

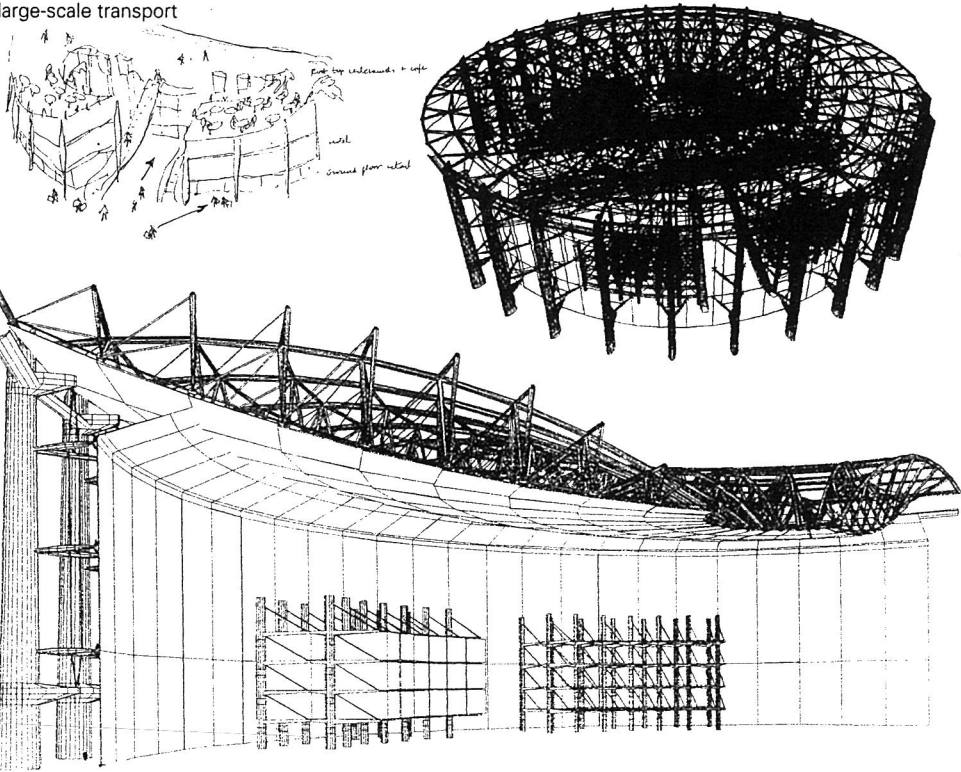
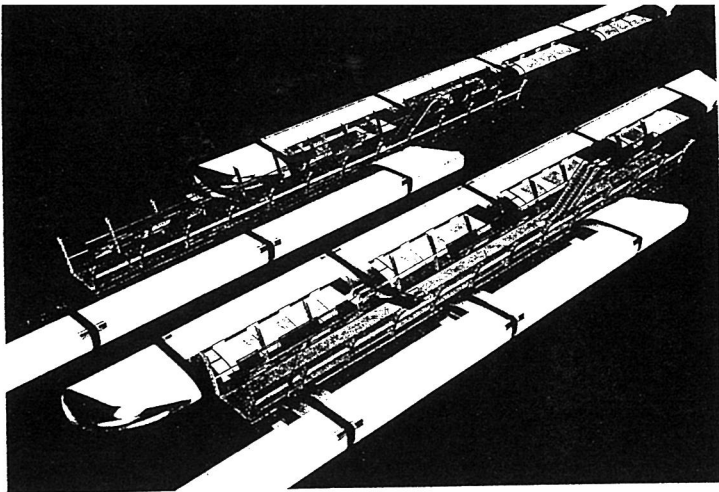
by Daniel Chow



# TASK FORCE

## RAILNET

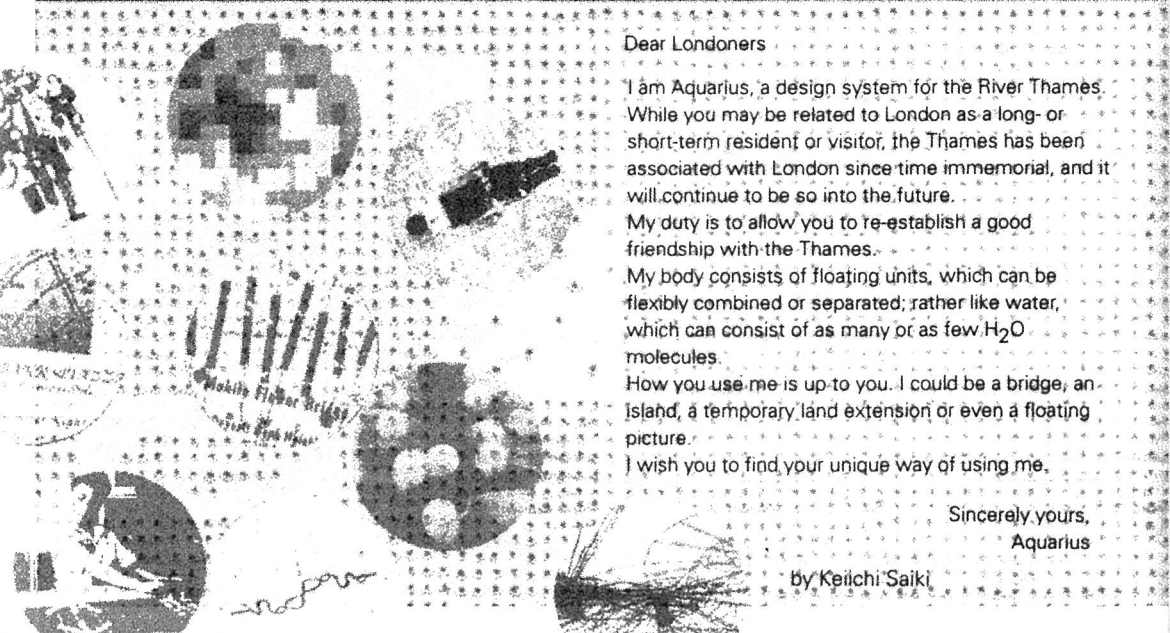
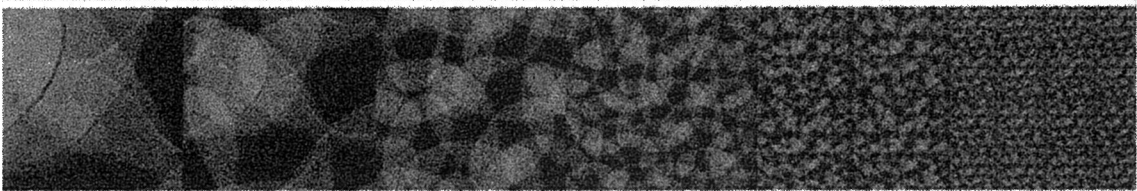
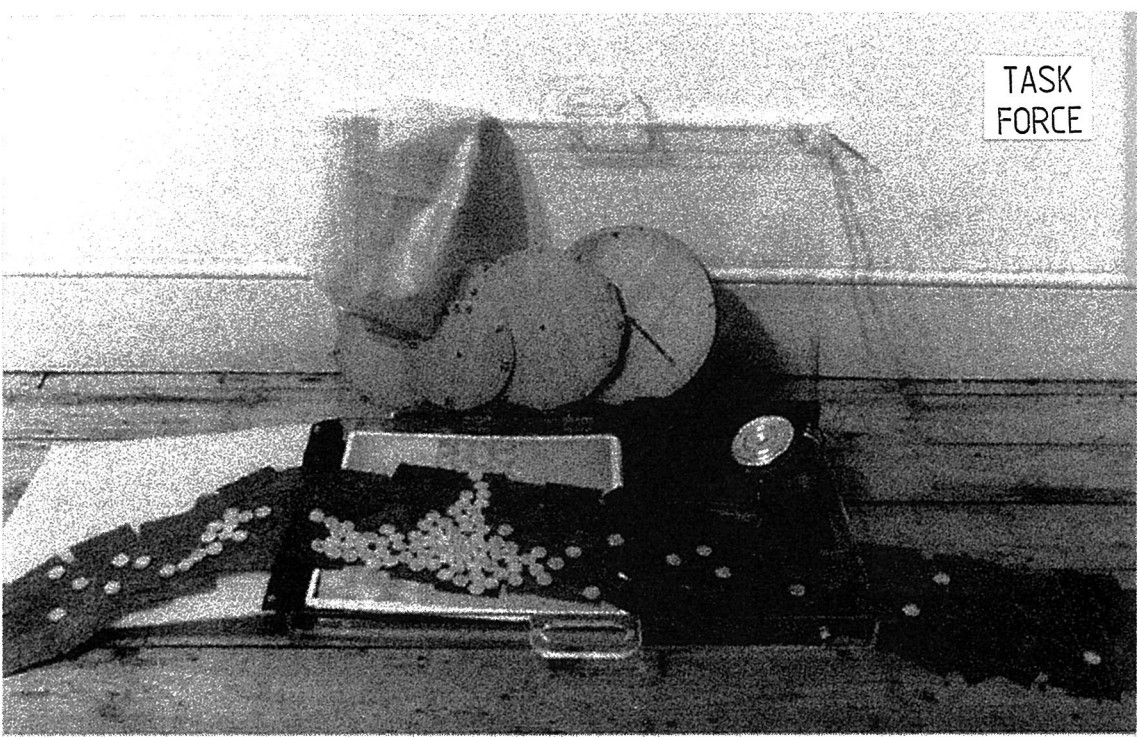
An integrated design for a high-speed, high-level, high-technology passenger transport system. RailNet sets out to establish a major new infrastructure network complementary to existing overburdened systems. It seeks to minimise social, environmental and economic damage, historically accounted for as a justified cost of a large-scale transport project.



Uninterrupted by a single road vehicle, train, aircraft, signal, junction or intersection, RailNet's projected efficiency and reliability lies in its simplicity of design. City transfer is relocated to its periphery, providing choice locations on the city's point of access. Cross-referenced technology and design analogies clarify the RailNet intent and usefulness. The passenger is the proposed system's principal component and its most critical judge.

by Jonathan George Hagan

# TASK FORCE



Dear Londoners

I am Aquarius, a design system for the River Thames. While you may be related to London as a long- or short-term resident or visitor, the Thames has been associated with London since time immemorial, and it will continue to be so into the future. My duty is to allow you to re-establish a good friendship with the Thames. My body consists of floating units, which can be flexibly combined or separated; rather like water, which can consist of as many or as few H<sub>2</sub>O molecules. How you use me is up to you. I could be a bridge, an island, a temporary land extension or even a floating picture. I wish you to find your unique way of using me.

Sincerely yours,  
Aquarius

by Keiichi Saiki

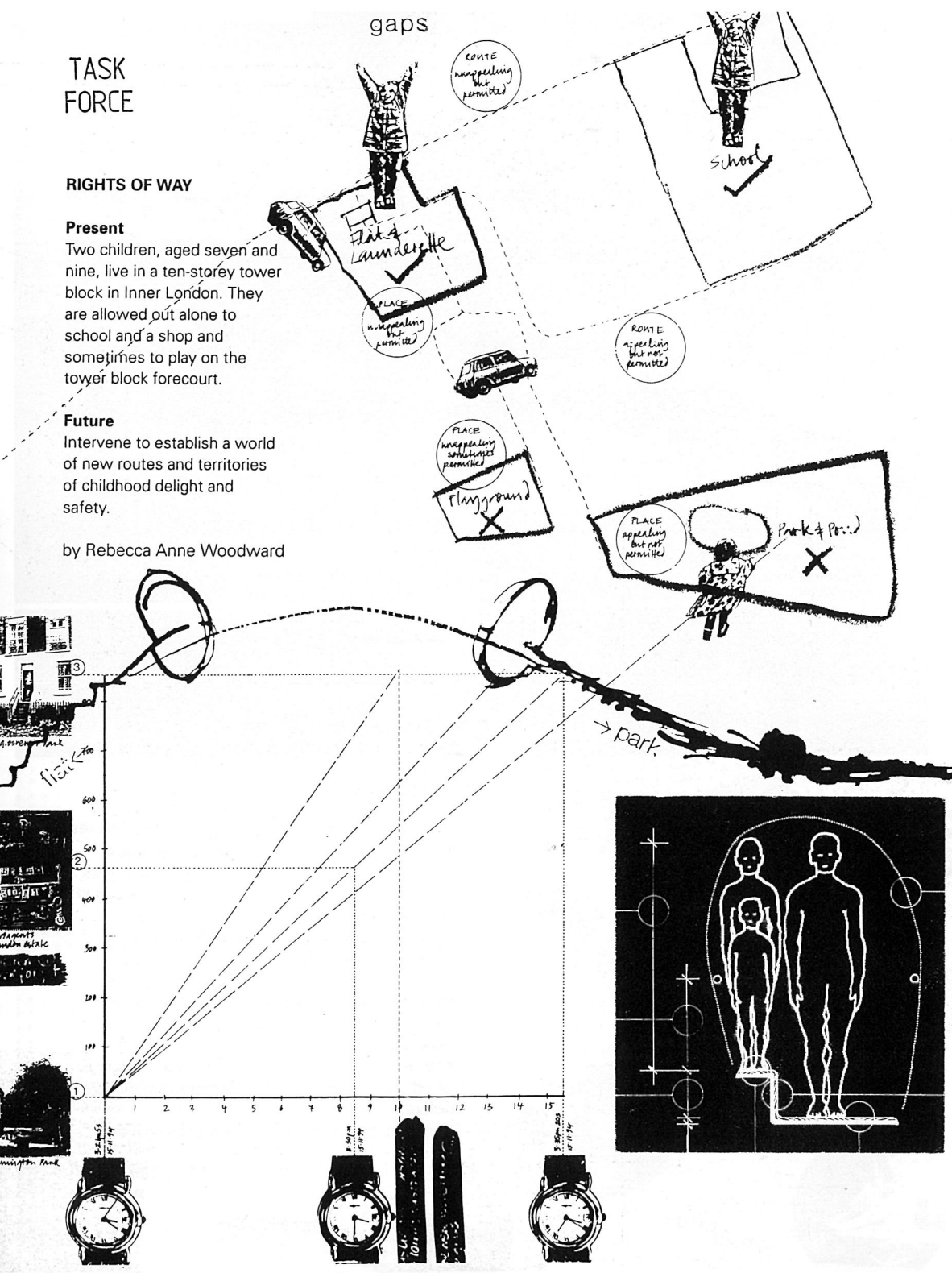
# TASK FORCE

## RIGHTS OF WAY

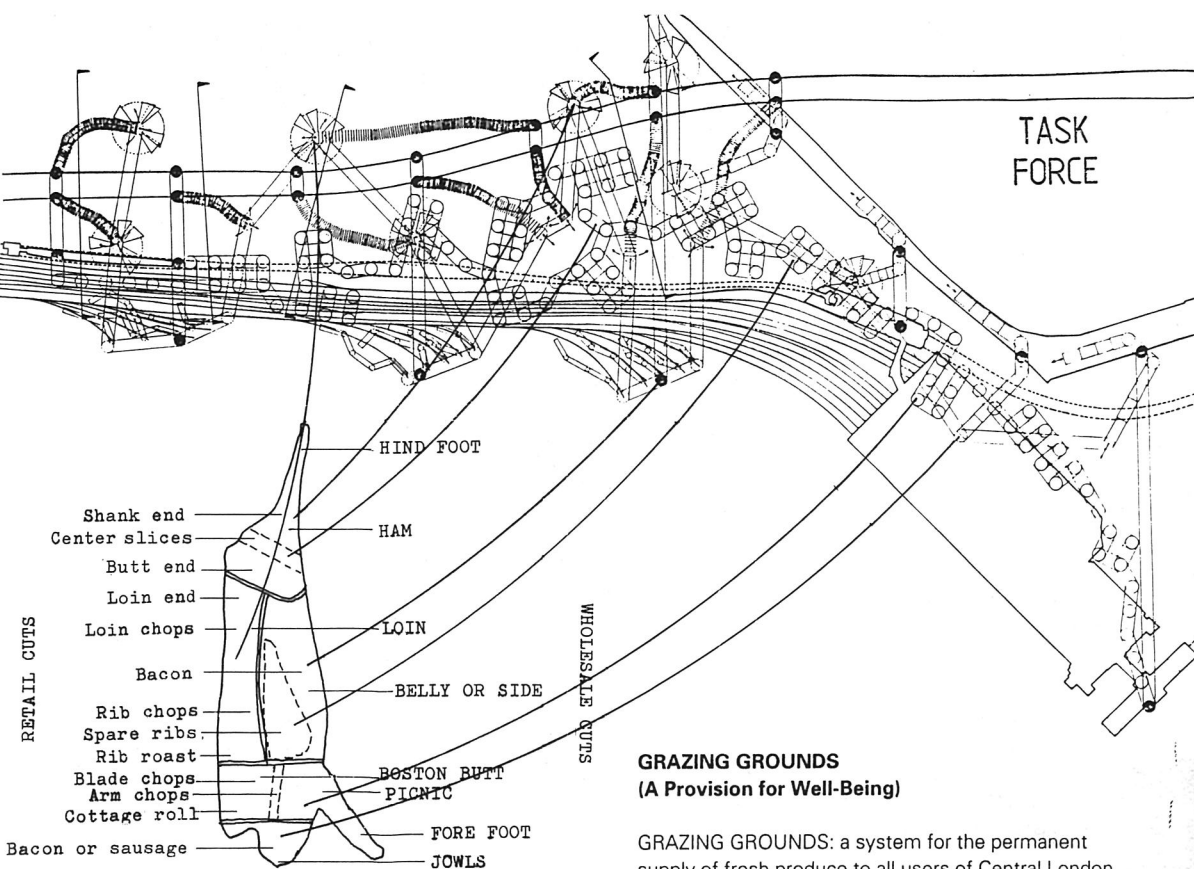
**Present**  
Two children, aged seven and nine, live in a ten-storey tower block in Inner London. They are allowed out alone to school and a shop and sometimes to play on the tower block forecourt.

**Future**  
Intervene to establish a world of new routes and territories of childhood delight and safety.

by Rebecca Anne Woodward



# TASK FORCE



## GRAZING GROUNDS (A Provision for Well-Being)

GRAZING GROUNDS: a system for the permanent supply of fresh produce to all users of Central London. The system is composed of four main feeders, situated in the north, south, east, and west of Central London. The feeders work on the basis of GENEROSITY: they can adapt to the conditions and environment of the various different sites but they never become fixed or rigid. They should be as easy to change as they are to use, allowing for growth, contraction or death. The feeders are incorporated into institutions that influence fixed areas like a police station, school, or laundrette. Therefore the system gives the user the option of grazing while moving through the city and using its different institutions.

by Jaime Parlade Browne

